

fabric 
godmother



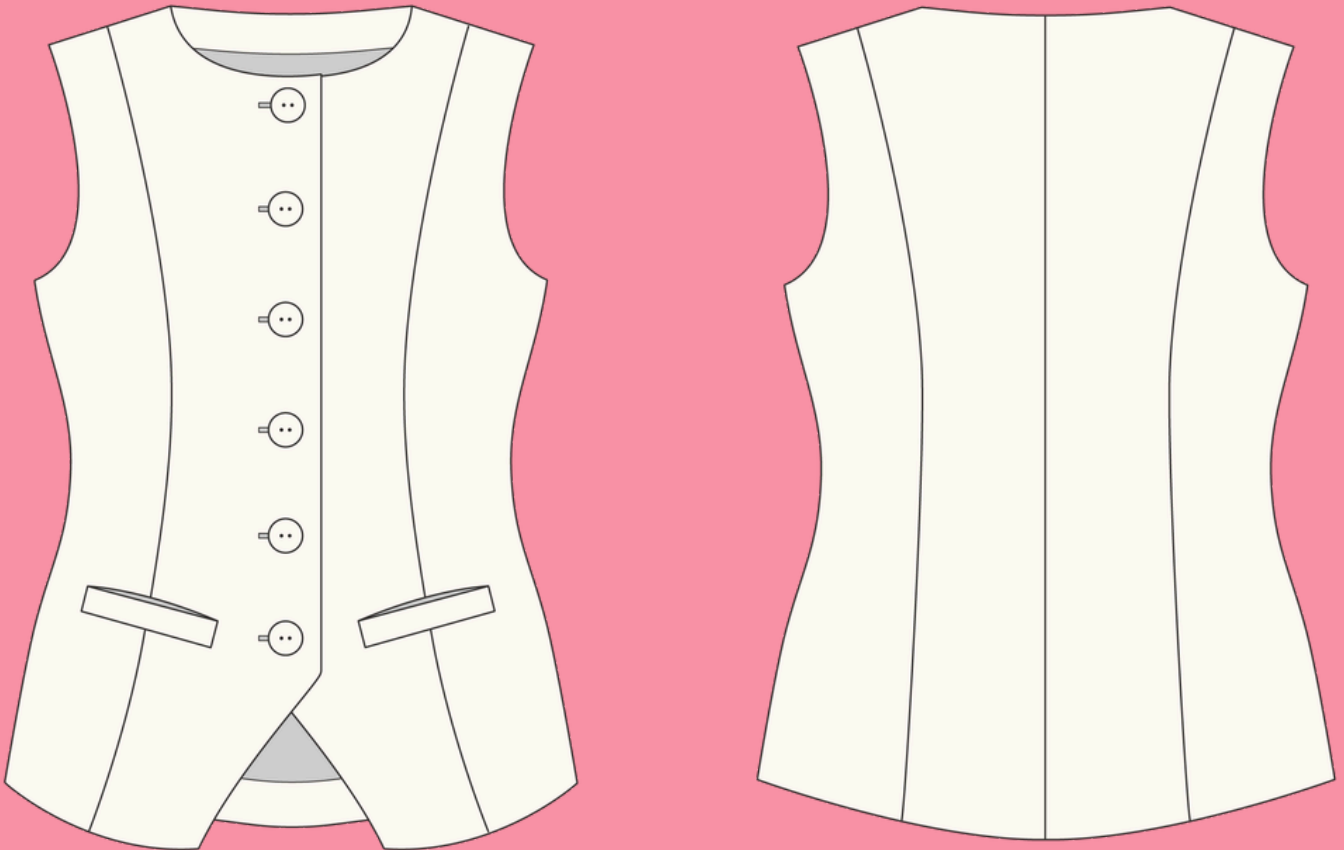
**JUNE
DREAM
WARDROBE
NEWSLETTER**

MARLOWE X BAHAMA: CARIBBEAN CHIC



This June, the Dream Wardrobe box brings you another stunning Fabric Godmother pattern - the Marlowe Waistcoat. Effortless tailored style combined with quiet luxury - this your ticket to staying cool as temperatures rise in the city or under the palm trees.

THE MARLOWE WAISTCOAT FROM FABRIC GODMOTHER



Designed to blur the line between tailoring and everyday dressing, the Marlowe waistcoat is a modern wardrobe staple with a softly structured, feminine feel. Cut to be worn as a stand-alone top, it features a sleek, fitted silhouette that gently skims the body for an effortlessly polished look. Wear it solo through summer as a chic sleeveless top, or layered over a fine tee or shirt when the weather cools for an easy year-round piece.

Carefully placed princess seams shape the waistcoat beautifully and can be adjusted to achieve the perfect fit, while generous side seam allowances leave room for further customisation of the silhouette.

Fully lined for a clean, professional finish inside and out, Marlowe feels just as refined as it looks. The front closes with six or seven buttons, adding a timeless tailored detail that can be sharply styled or relaxed. Elegant, versatile, and endlessly wearable, Marlowe is designed to become a forever piece in your handmade wardrobe.

The pattern is classed as intermediate and comes in sizes 6-30.



BAHAMA VISCOSE LINEN



This exclusive Fabric Godmother design is a vibrant tropical island inspired print of green palm leaves on a soft ivory background. This softly drapey blend has the classic slub linen look, whilst retaining a luxuriously fluid handle. It is perfect for blouses, shirts, trousers and skirts, or anything else you want for your tropical getaway.

Bahama viscose linen is 45% viscose, 55% linen, and is 135cm wide.

If you require more of the Bahama viscose linen for this or any other project, you can find it on the website [here](#). As with most fabrics, we recommend pre-washing to remove any dressing and allow for shrinking.

BAHAMA VISCOSE LINEN ALTERNATIVE PATTERNS

pn

This month we have given you enough fabric to make the Marlowe Waistcoat, but it would also look beautiful in any of these alternative patterns:



Fabric Godmother - Ren
Shorts

Tilly and the Buttons - Leah
Top & Dress



BAHAMA VISCOSE LINEN ALTERNATIVE PATTERNS

pn

Jessilou's Patterns -
Sunrise Skort



Les Perlins - Playback Skort

MARLOWE WAISTCOAT ALTERNATIVE FABRICS

Think you might want to make your Marlowe Waistcoat in a different fabric? These choices will give you an equally polished look when paired with your pattern.



Cole Denim in Blossom Pink



European Tumbled Linen in
Bordeaux

MARLOWE WAISTCOAT ALTERNATIVE FABRICS

Kit Polka Dot Denim in Black
and White



European Tumbled Linen in
Parchment



Marley Gingham Tumbled Linen
in Black and White

THIS MONTH'S GIFT: TROPICAL PATCH DUO



The perfect match for your tropical themed fabric, this month's gift is a pair of sweet sew-on patches.

Nothing says hot holiday sewing like a pair of bananas or a palm tree! Add them to your tote bag, denim jacket, or as a detail on the back pocket of your jeans for a little summer holiday vibe.

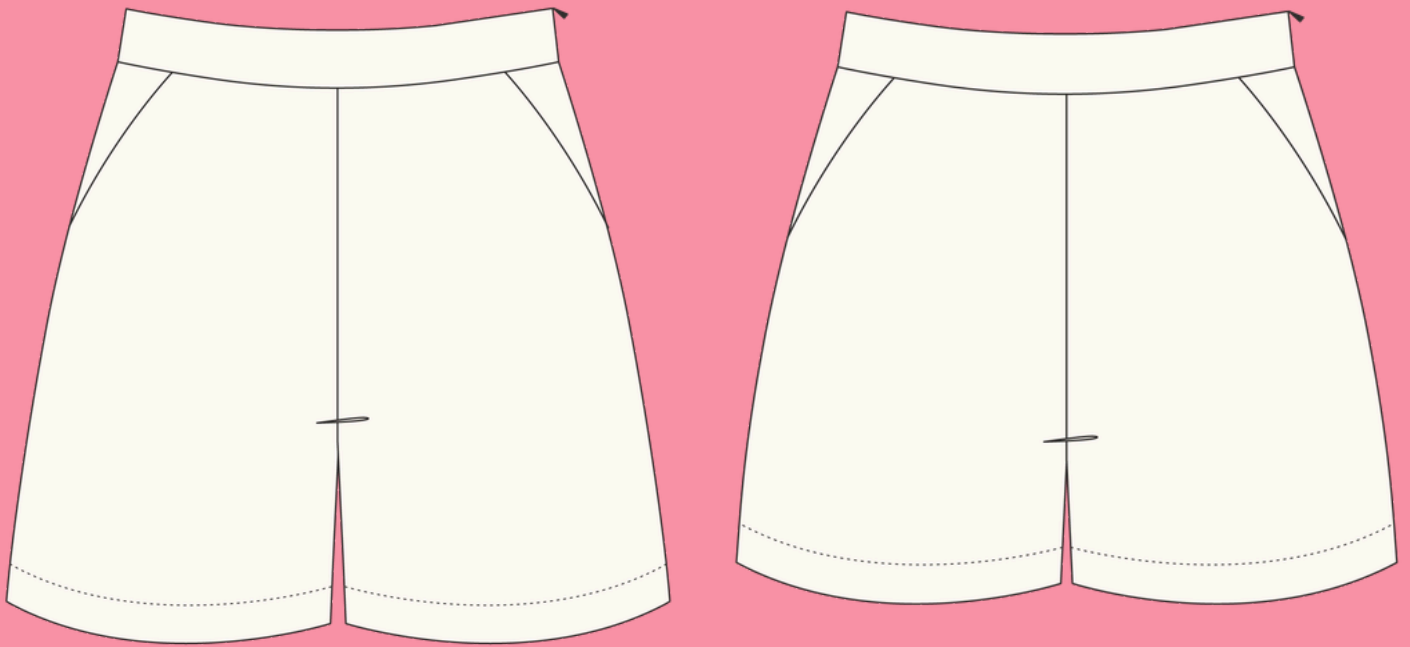
THIS MONTH'S BONUS GIFT: REN SHORTS DISCOUNT CODE



The Marlowe waistcoat launches alongside another pattern, the Fabric Godmother Ren shorts!

As a thank-you for being a loyal Dream Wardrobe subscriber, you can get 50% off the Ren shorts when they launch. using code **DWREN50** (RRP £14.00). Code valid until 01/08/2026 - enter at checkout to claim your discount.

THIS MONTH'S BONUS GIFT: REN SHORTS DISCOUNT CODE



Designed to bring effortless tailoring into your everyday wardrobe, the Ren shorts are a modern summer staple with a clean, structured feel.

Available in both classic short and Bermuda lengths, Ren is designed for everything from relaxed days to elevated everyday dressing. Discreet side pockets add practicality without compromising the clean lines, while a concealed side zip keeps the silhouette smooth and polished.

IN THIS MONTH'S BOX:

- Fabric Godmother Marlowe Waistcoat pattern
- Enough Bahama Viscose Linen to make the pattern
- Tropical Fabric Patch
- Matching thread

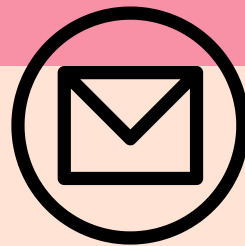


TO MAKE UP THE MARLOWE WAISTCOAT YOU WILL NEED:

- Lightweight interfacing
- Lining fabric - Wanda Cotton Poplin in Natural
- Pattern instructions - [click here](#)
- Buy the complete Haberdashery kit, including interfacing and buttons [here](#)

Want to share your Dream Wardrobe? Use the hashtag #fgdreamwardrobe and share your unboxing and final makes on social media.

Happy sewing, Josie xxx



fabric ~~~~~
godmother

MARLOWE WAISTCOAT – SEWING NOTES

pn

For this month's Dream Wardrobe, we have provided some hints and tips for sewing the Marlowe on our website – click [here](#) to see how to make your waistcoat with our help. Keep checking as we update with more hints!

As always, we suggest measuring your body carefully and comparing it to the finished garment measurements on the pattern to help you pick the correct size. If you are unsure, make a toile first to avoid wasting your beautiful fabric!